



# WILDFIRE MITIGATION ACTION PLAN

Presentation to Council

Oct 7, 2019



# OUTLINE

- Background and History
- Community Wildfire Protection Plan (CWPP)
- Community Resiliency Investment (CRI)
- Summary and Conclusions

# BACKGROUND

- 2005 Wildland/Urban Interface Wildfire Management Strategy
  - First Community Wildfire Protection Plan (CWPP)
- Past treatments:
  - Pine beetle caused
  - all very high and high risk areas treated between 2006-2012
  - Community Forest License for Crown Land
- 2009 Landscape Scale Fire Behaviour Modeling





# Current Wildfire Mitigation Works

- Phase 1: Community Wildfire Protection Plan (CWPP)
  - Report completed April 2019
  - GIS data under review by province
- Phase 2: Community Resiliency Investment (CRI) – Prescription Development
  - Currently in progress
- Phase 3: Community Resiliency Investment - Fuel Removal
  - Intend to pursue grant funding call in Fall 2019 for works in 2020 - 2021

# Community Wildfire Protection Plan (CWPP)

- Phase 1 – 99% complete, awaiting final approval from province
- UBCM grant funding: Strategic Wildfire Prevention Initiative (SWPI), 75% of eligible costs
- Areas of Wildfire Risk were identified.
- Framework to help prepare community to defend against wildfire events. Recommendations include:
  - Fuel Removal;
  - FireSmart planning;
  - Community education; and,
  - Wildfire response.



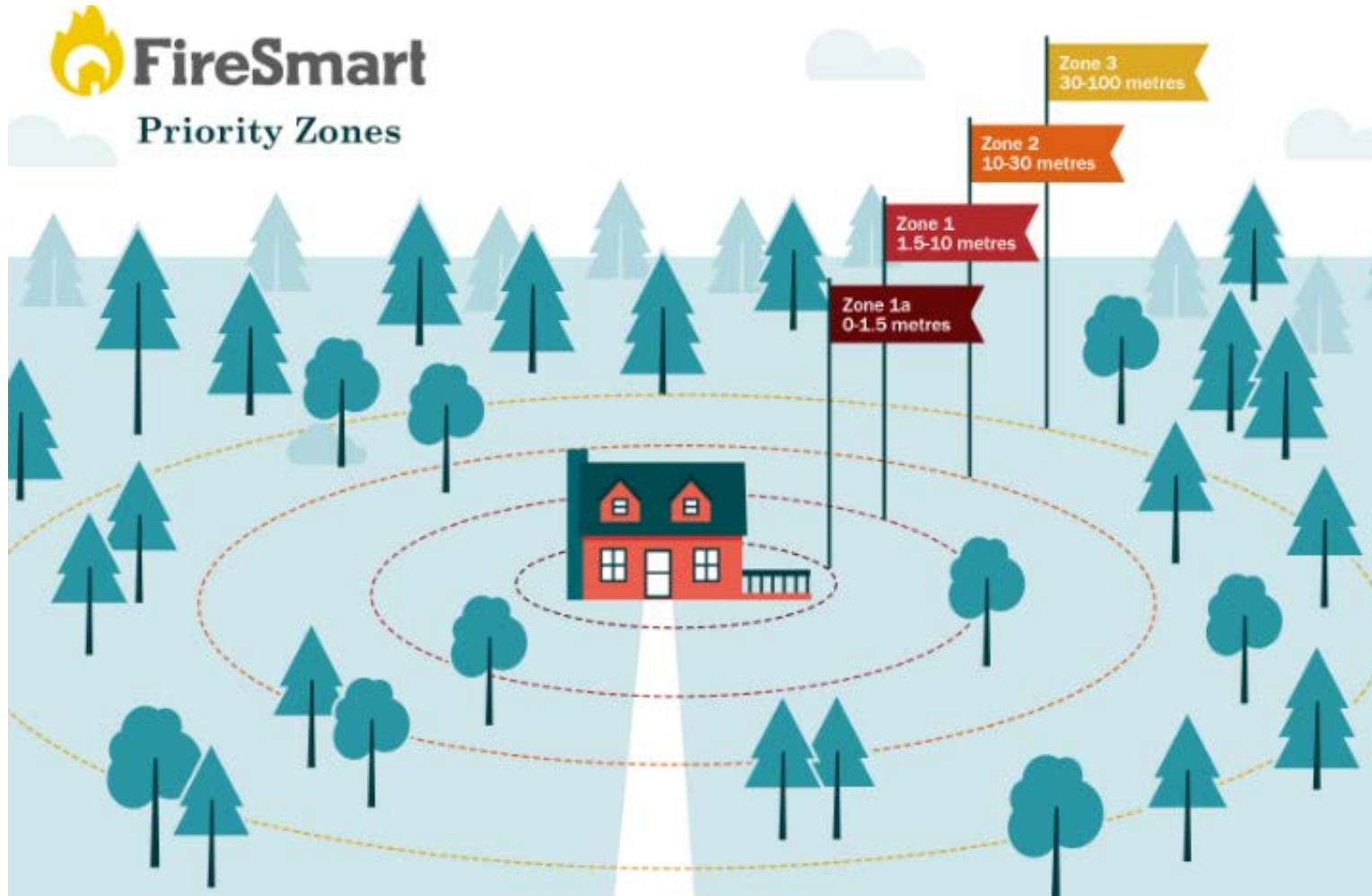




# Community Resiliency Investment (CRI)

- Phase 2 – in early stages
- UBCM grant funding – shared with RDFFG
  - Managed by Regional District:
    - FireSmart Education
    - Firesmart Staff Training
    - FireSmart Activities for Private Land
  - Managed by City of Prince George:
    - Emergency Planning
    - Prescription development
    - Grant coordination

# FireSmart - RDFFG



# Emergency Planning - CPG

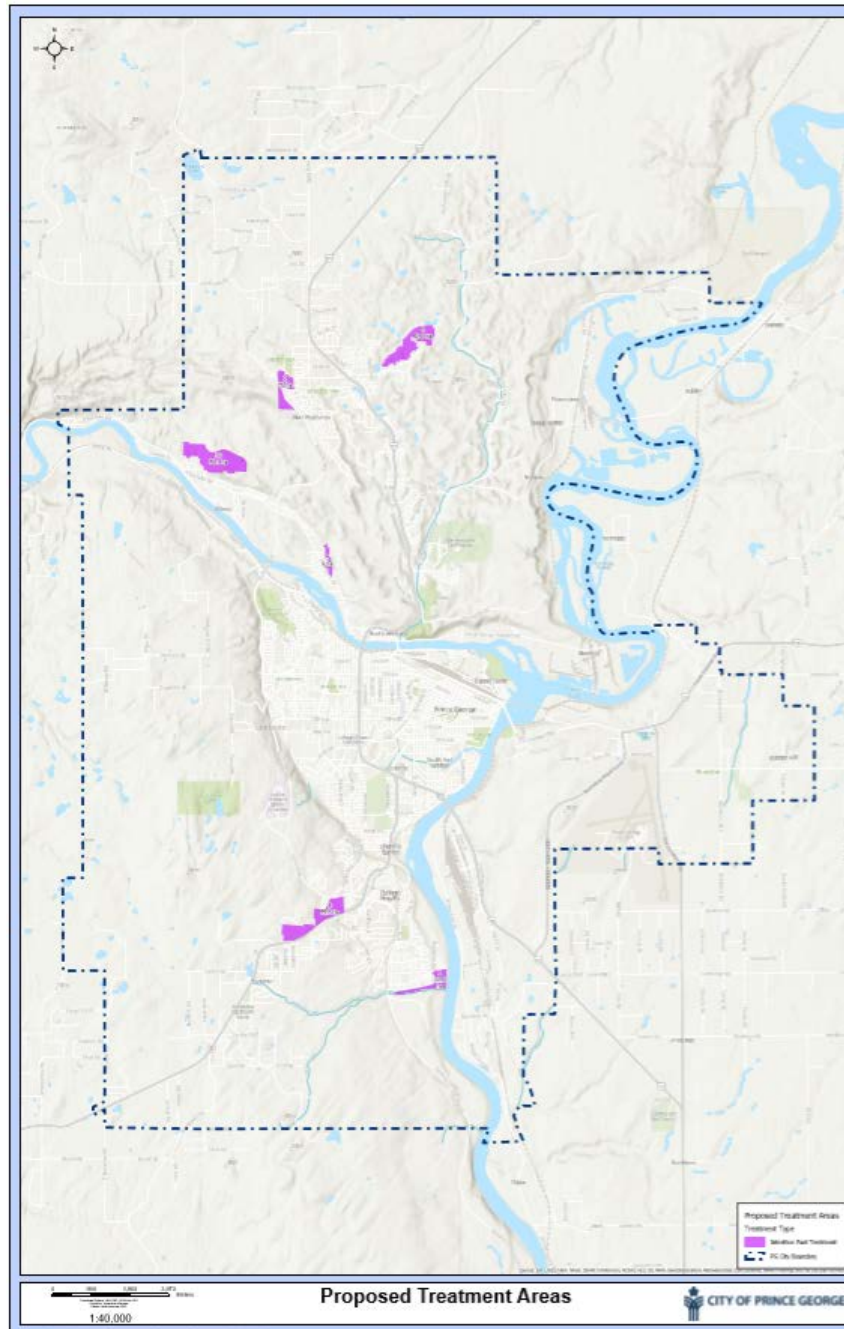
- UBCM CRIP grant - \$25,000
- Tabletop Exercise series through Spring 2019
- City-wide Evacuation Map and Community Evacuation Assembly Points







**CWPP  
identified  
areas of  
wildfire risk.**



**Six areas of  
public land  
were  
selected  
within  
municipal  
boundaries  
for priority  
fuel removal.**

# Phase 2: Prescription Development

- Development of Fuel Management Prescriptions in 6 Priority Areas
  - Microscale analysis – site specific prescriptions based on fuel hazard levels, geotechnical constraints, cultural and ecological values and access.





# Phase 2: Prescription Development



**Pre-Treatment Conditions**



**Post-Treatment Conditions**



# Where are we at?

- Info-sharing letters sent out in August to adjacent property owners and other stakeholders (including recreational groups, Lheidli T'enneh First Nation)
- Public Open Houses on October 8 (Hart); October 10<sup>th</sup> (College Heights)
  - Prescription areas, what treatment entails, opportunity for questions and input
- Focusing on 3 areas for Phase 3 - 2020 UBCM Community Resiliency Investment funding call for Fuel Removal.
  - Broddy, Malaspina, Pidherny

# Conclusion

- Wildfire Mitigation Work is occurring in 3 phases
  - Phase 1: CWPP is 99% complete
  - Phase 2: CRI - prescription development is in progress
  - Phase 3: CRI - fuel removal, 2020-2021 (grant eligible)
- Private landowners with concerns of wildfire risk on their own property may contact RD for FireSmart.





**THANK YOU**

**QUESTIONS?**

Andrea Byrne, RPBio

Acting Supervisor Energy, Environment & Sustainability