

CITY OF PRINCE GEORGE
BYLAW NO. 9046, 2019

A Bylaw of the City of Prince George to permanently close a portion of road located adjacent to 2851 Gogolin Road to remove its highway dedication for the purpose of future disposal of the lands.

WHEREAS the Council of the City of Prince George deems it desirable that an approximate 106.3 square metre area of road shown on Reference Plan EPP93590 be closed to traffic, and that the highway dedication thereof be removed;

AND WHEREAS, in accordance with section 40 of the *Community Charter*, notice of intention to adopt this bylaw has been delivered, posted and published, and an opportunity has been provided for persons who consider they are affected by this bylaw to make representations to Council;

NOW THEREFORE the Council of the City of Prince George, in open meeting assembled, **ENACTS AS FOLLOWS:**

1. That the portion of highway shown outlined in bold black on Reference Plan EPP93590, attached hereto as Appendix "A" and forming part of this Bylaw, is closed to traffic.
2. That the dedication of the portion of highway shown outlined in bold black on Reference Plan EPP93590, attached hereto as Appendix "A" and forming part of this Bylaw, is removed.
3. The Mayor and Corporate Officer are hereby empowered to do all things necessary to give effect to this Bylaw.
4. This Bylaw shall come into full force and take effect upon its adoption and shall be filed with the Registrar of the applicable Land Title Office.
5. This Bylaw may be cited for all purposes as "City of Prince George 2851 Gogolin Road Closure Bylaw No. 9046, 2019".

READ A FIRST TIME THIS 29TH DAY OF JULY , 2019.

READ A SECOND TIME THIS 29TH DAY OF JULY , 2019.

First two readings passed by
a
and eligible to vote.

UNANIMOUS decision of Member of City Council present

READ A THIRD TIME THIS 19TH DAY OF AUGUST , 2019.

Third reading passed by a UNANIMOUS decision of Member of City Council present and eligible to vote.

Certified correct as passed third reading this 26TH day of AUGUST , 2019.


CORPORATE OFFICER OF
THE CITY OF PRINCE GEORGE

APPROVED BY THE MINISTER OF TRANSPORTATION AND INFRASTRUCTURE PURSUANT TO THE PROVISIONS OF SECTION 41(3) OF THE COMMUNITY CHARTER.

THIS 13 DAY OF SEPTEMBER 2019.


for MINISTER OF TRANSPORTATION
AND INFRASTRUCTURE

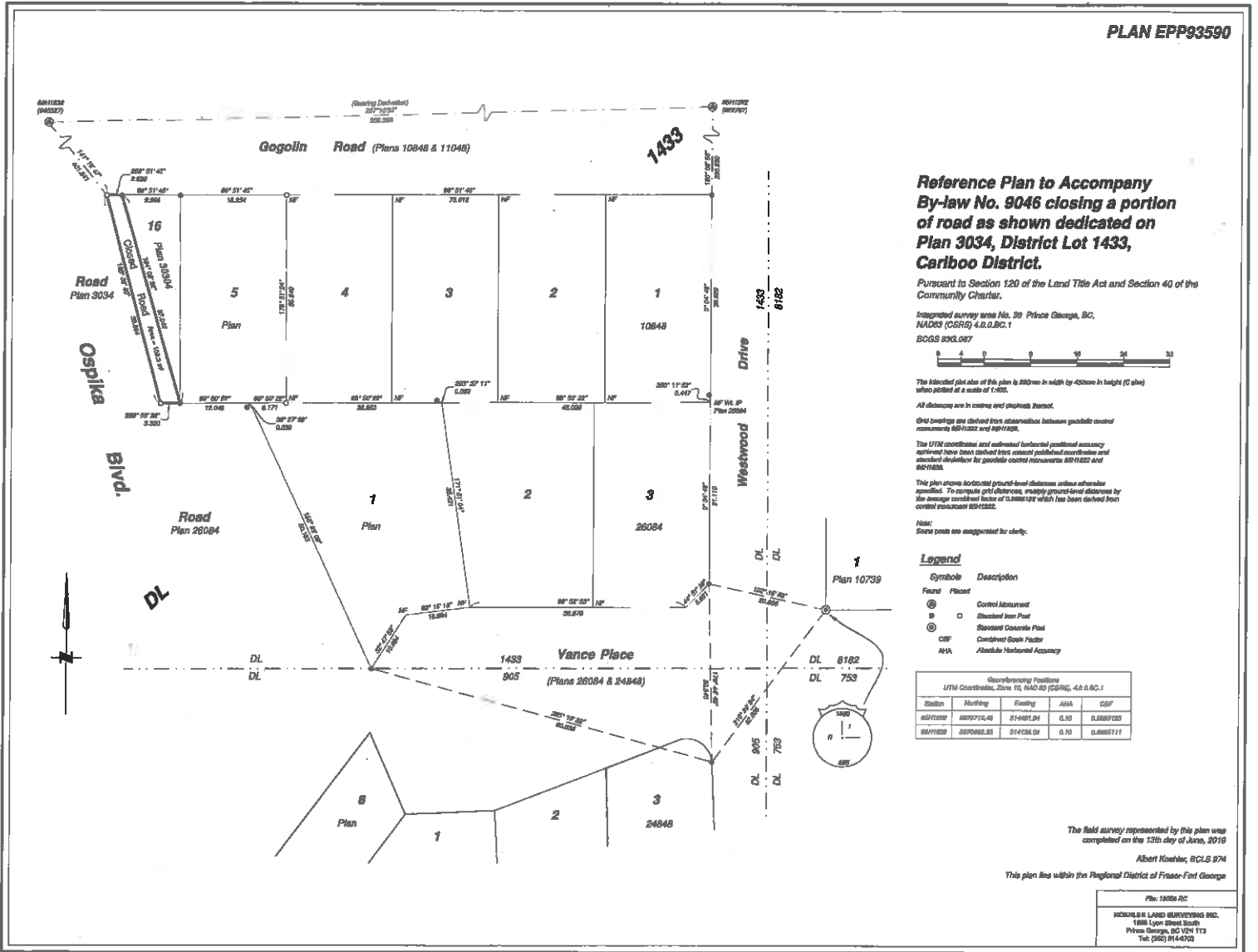
ADOPTED THIS DAY OF , 2019, BY A
DECISION OF ALL MEMBERS OF CITY COUNCIL PRESENT AND
ELIGIBLE TO VOTE.

MAYOR

CORPORATE OFFICER

Appendix A

PLAN EPP93590



**Reference Plan to Accompany
By-law No. 9046 closing a portion
of road as shown dedicated on
Plan 3034, District Lot 1433,
Cariboo District.**

Pursuant to Section 120 of the Land Title Act and Section 40 of the Community Charter.

Integrated survey area No. 39 Prince George, BC,
NAD83 (CSRS) 4.8 D.B.C.1
BCGS 836.087



The indicated plot area of this plan is 250mm in width by 400mm in height (C plus) when plotted at a scale of 1:400.

All distances are in metres and decimal format.

Old bearings are indicated when observations between points occur concurrently 88/1122 and 88/1123.

The UTM coordinates and adjusted horizontal positional accuracy reported have been derived from recent published coordinates and checked in-field for geoid control measurements 88/1122 and 88/1123.

This plan shows horizontal ground-level distances unless otherwise specified. To compute grid distances, multiply ground-level distances by the average scale factor of 0.999997 which has been derived from control enclosures 88/1122.

Note:
Some points are suggested for clarity.

Legend

Symbol	Description
DL	DL
⊙	Control Monument
⊠	Control Iron Post
⊙	Standard Concrete Post
CSF	Control Scale Factor
N/A	Abolished Horizontal Accuracy

Georeferencing Positions				
UTM Coordinates, Zone 18, NAD 83 (CSRS), 4.8 D.B.C.1				
Station	Marking	Easting	ANA	CSF
88/1122	88/1122.05	514281.84	0.10	0.99999735
88/1123	88/1123.05	514282.06	0.10	0.99999711

The field survey represented by this plan was completed on the 13th day of June, 2019

Albert Koshic, BCL.S 974

This plan lies within the Regional District of Fraser-Fort George

Plan: 18059-PC
 KOSHIK & LAND SURVEYING INC.
 1885 Lyon Street South
 Prince George, BC V2N 1T3
 Tel: (250) 944-0700