

CITY OF PRINCE GEORGE
BYLAW NO. 9045, 2019

A Bylaw of the City of Prince George to permanently close a portion of road located adjacent to 2840 Vance Place to remove its highway dedication for the purpose of future disposal of the lands.

WHEREAS the Council of the City of Prince George deems it desirable that an approximate 222.1 square metre area of road shown on Reference Plan EPP93622 be closed to traffic, and that the highway dedication thereof be removed;

AND WHEREAS, in accordance with section 40 of the *Community Charter*, notice of intention to adopt this bylaw has been delivered, posted and published; and an opportunity has been provided for persons who consider they are affected by this bylaw to make representations to Council;

NOW THEREFORE the Council of the City of Prince George, in open meeting assembled, ENACTS AS FOLLOWS:

1. That the portion of highway shown outlined in bold black on Reference Plan EPP93622, attached hereto as Appendix "A" and forming part of this Bylaw, is closed to traffic.
2. That the dedication of the portion of highway shown outlined in bold black on Reference Plan EPP93622, attached hereto as Appendix "A" and forming part of this Bylaw, is removed.
3. The Mayor and Corporate Officer are hereby empowered to do all things necessary to give effect to this Bylaw.
4. This Bylaw shall come into full force and take effect upon its adoption and shall be filed with the Registrar of the applicable Land Title Office.
5. This Bylaw may be cited for all purposes as "City of Prince George 2840 Vance Place Road Closure Bylaw No. 9045, 2019".

READ A FIRST TIME THIS 29TH DAY OF JULY , 2019.

READ A SECOND TIME THIS 29TH DAY OF JULY , 2019.

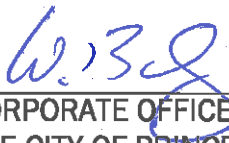
First two readings passed by
a
and eligible to vote.

UNANIMOUS decision of Member of City Council present

READ A THIRD TIME THIS 19TH DAY OF AUGUST , 2019.

Third reading passed by a UNANIMOUS decision of Member of City Council present and eligible to vote.

Certified correct as passed third reading this 26TH day of AUGUST , 2019.


CORPORATE OFFICER OF
THE CITY OF PRINCE GEORGE

APPROVED BY THE MINISTER OF TRANSPORTATION AND INFRASTRUCTURE PURSUANT TO THE PROVISIONS OF SECTION 41(3) OF THE COMMUNITY CHARTER.

THIS 13 DAY OF SEPTEMBER 2019.


for MINISTER OF TRANSPORTATION
AND INFRASTRUCTURE

ADOPTED THIS DAY OF , 2019, BY A
DECISION OF ALL MEMBERS OF CITY COUNCIL PRESENT AND
ELIGIBLE TO VOTE.

MAYOR

CORPORATE OFFICER

**Reference Plan to Accompany
By-law No. 9045 closing a portion
of road as shown dedicated on
Plan 26084, District Lot 1433,
Cariboo District.**

Pursuant to Section 120 of the Land Title Act and Section 40 of the Community Charter.

Integrated survey area No. 39 Prince Georges, BC,
NADES (CSRS) 4.0.D.BC.1
BCGS 93G.067



The intended plan area of this plan is 200m in width by 450m in height (C obs) when printed at a scale of 1:600.

All distances are in metres and decimetre fractions.

Grid bearings are derived from observations between geodetic control monuments 8911222 and 8911233.

The UTM coordinates and estimated horizontal positional accuracy achieved have been derived from recent published coordinates and accuracy definitions for geodetic control monuments 8911222 and 8911233.

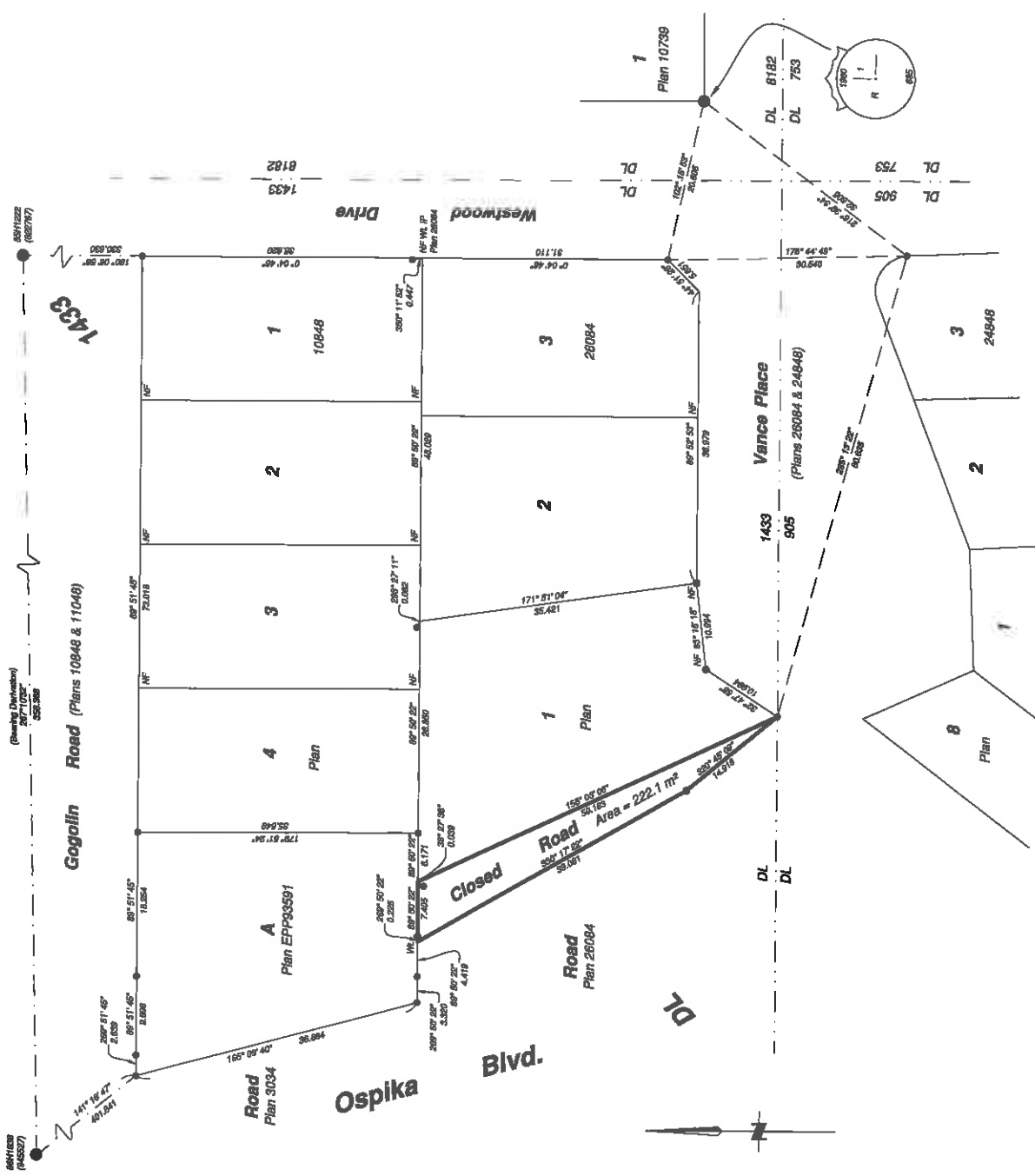
This plan shows horizontal ground-level distances unless otherwise specified. To compute grid distances, multiply ground-level distances by the average constant factor of 0.9999129 which has been derived from control monument 8911222.

Note: This plan shows one or more witness points which are not set out on the line corners). Some points are exaggerated for clarity.

Legend

- Symbols**
- Found Flashed
 - Control Monument
 - Standard Iron Pin
 - Standard Concrete Post
 - Combined Scale Factor
 - CSF
 - AMA
 - Absolute Horizontal Accuracy

Georeferencing Positions			
Station	Northing	Easting	CSF
8911222	507070.48	514481.84	0.10
8911233	507062.89	514484.08	0.10



The field survey represented by this plan was completed on the 13th day of June, 2019
Albert Kowler, BCCL 974
This plan lies within the Regional District of Fraser-Fort George

File: 1662740
KOEHLER LAND SURVEYING INC.
1625 Lynn Street South
Prince George, BC V2N 1T3
Tel: (250) 914-0700