

SUBDIVISION PLAN OF
CLOSED ROAD, PLAN EPP118799;
LOT 19, EXCEPT PLAN 29298;
AND LOTS 20 THROUGH 29,
ALL IN BLOCK 45, PLAN 902;
LOTS 20 AND 21,
EXCEPT PLAN 29298;
AND LOTS 22 THROUGH 24;
ALL IN BLOCK 52, PLAN 902;
PARCEL A (70051M)
OF BLOCK A, PLAN 2643;
ALL IN DISTRICT LOT 629,
CARIBOO DISTRICT.

THIS PLAN LIES WITHIN INTEGRATED SURVEY AREA
No. 39 PRINCE GEORGE, BC, NAD83 (CSRS) 4.0.0.BC.1

BCGS 93G.097

10 5 0 10 20 30 40
THE INTENDED PLOT SIZE OF THIS PLAN IS 560mm IN WIDTH BY 432mm
IN HEIGHT (C SIZE) WHEN PLOTTED AT A SCALE OF 1:500.

ALL DISTANCES ARE IN METRES AND DECIMALS THEREOF.

GRID BEARINGS ARE DERIVED FROM PLAN EPP118799.

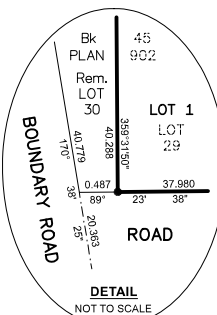
THE UTM COORDINATES AND ESTIMATED ABSOLUTE ACCURACY
ACHIEVED HAVE BEEN DERIVED FROM PLAN EPP118799.

THIS PLAN SHOWS HORIZONTAL GROUND-LEVEL DISTANCES
UNLESS OTHERWISE SPECIFIED. TO COMPUTE GRID DISTANCES,
MULTIPLY GROUND-LEVEL DISTANCES BY THE COMBINED FACTOR
OF 0.9995004 WHICH HAS BEEN DERIVED FROM PLAN EPP118799.

NOTE:
THIS PLAN SHOWS ONE OR MORE WITNESS POSTS
WHICH ARE NOT SET ON THE TRUE CORNER(S).

LEGEND

SYMBOLS	DESCRIPTION
FOUND	PLACED
●	CONTROL MONUMENT
●	STANDARD IRON POST
Bk	BLOCK
OU	ORIGIN UNKNOWN
EAA	ESTIMATED ABSOLUTE ACCURACY



GEOREFERENCING POSITIONS UTM COORDINATES, ZONE 10, NAD 83 (CSRS), 4.0.0.BC.1			
STATION	NORTHING	EASTING	EAA
Fd. IP 'A'	5972942.73	521243.51	0.08
Fd. IP 'B'	5972784.11	521144.54	0.08

THIS PLAN LIES WITHIN THE JURISDICTION OF THE
APPROVING OFFICER FOR THE CITY OF PRINCE GEORGE.

CPG FILE NO. SD100718

THE FIELD SURVEY REPRESENTED BY THIS PLAN WAS COMPLETED
ON THE 18th DAY OF FEBRUARY, 2022
SHAUNA C. GOERTZEN, BCLS 798

THIS PLAN LIES WITHIN THE REGIONAL DISTRICT OF FRASER-FORT GEORGE.

