



urban
matters

PRINCE GEORGE HOUSING NEEDS REPORT

Summary of Findings

February 2022

TOPICS

01

Population & Projections

02

Housing Profile

03

Understanding Housing Need

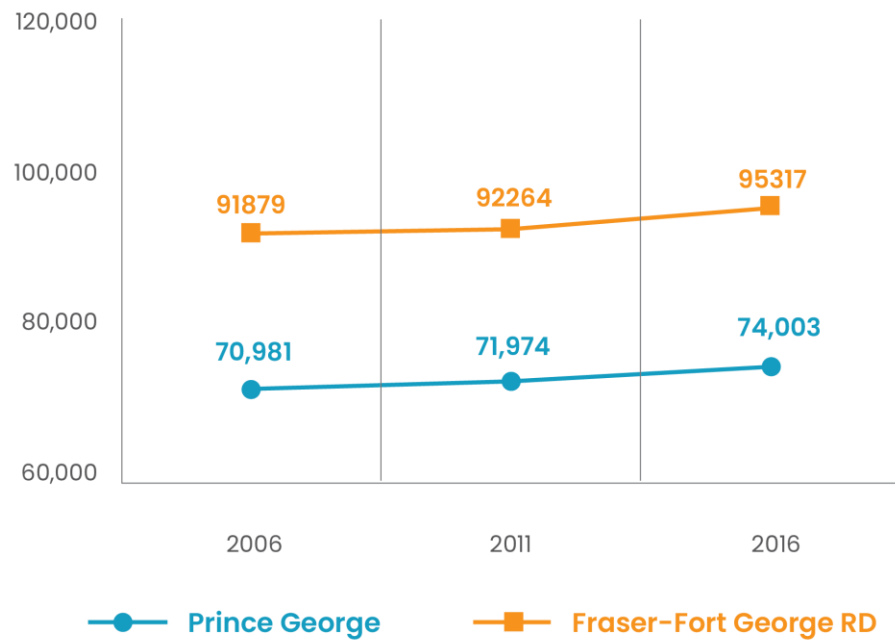
04

Key Findings From Engagement

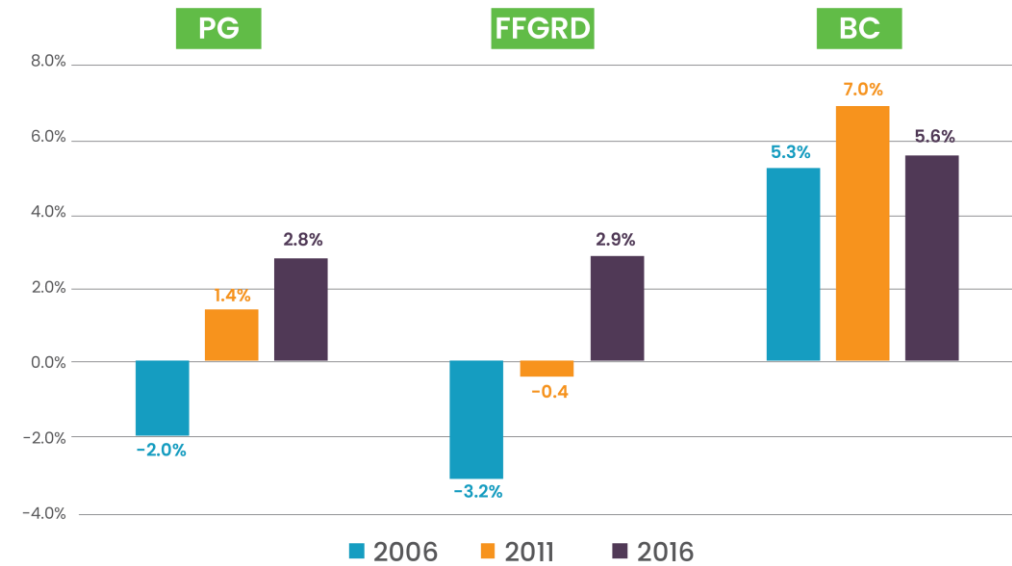
05

Statements of Need for Each Group

POPULATION



Population, City of Prince George & Regional District of Fraser-Fort George, 2006-2016



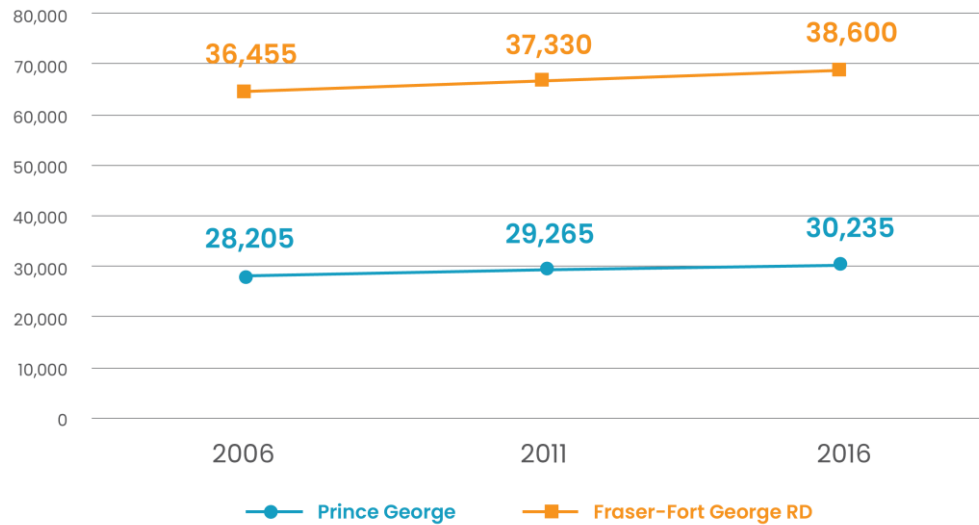
Population Change, City of Prince George, FFGRD and BC 2006-2016

HOUSEHOLDS & COMPOSITION



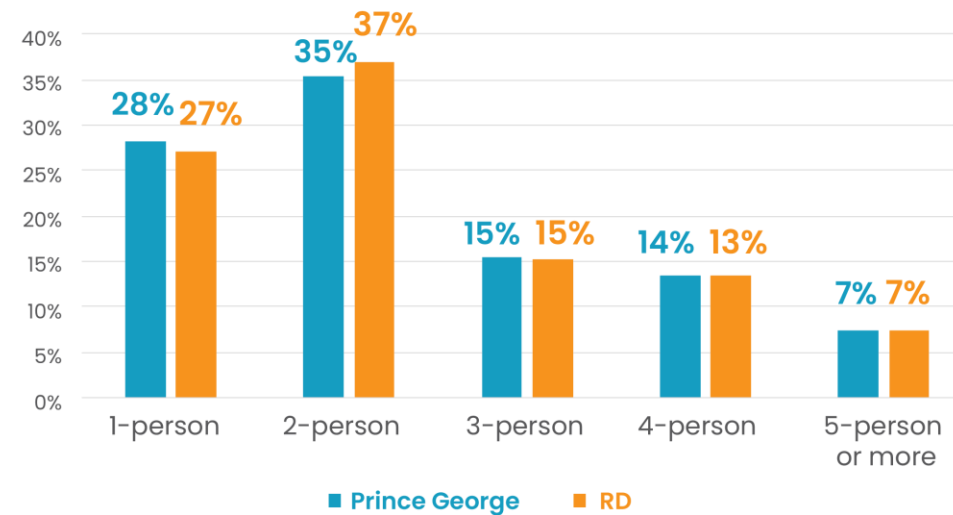
31% OF HOUSEHOLDS
ARE RENTERS
(STATSCAN 2016)

Number of Private Households



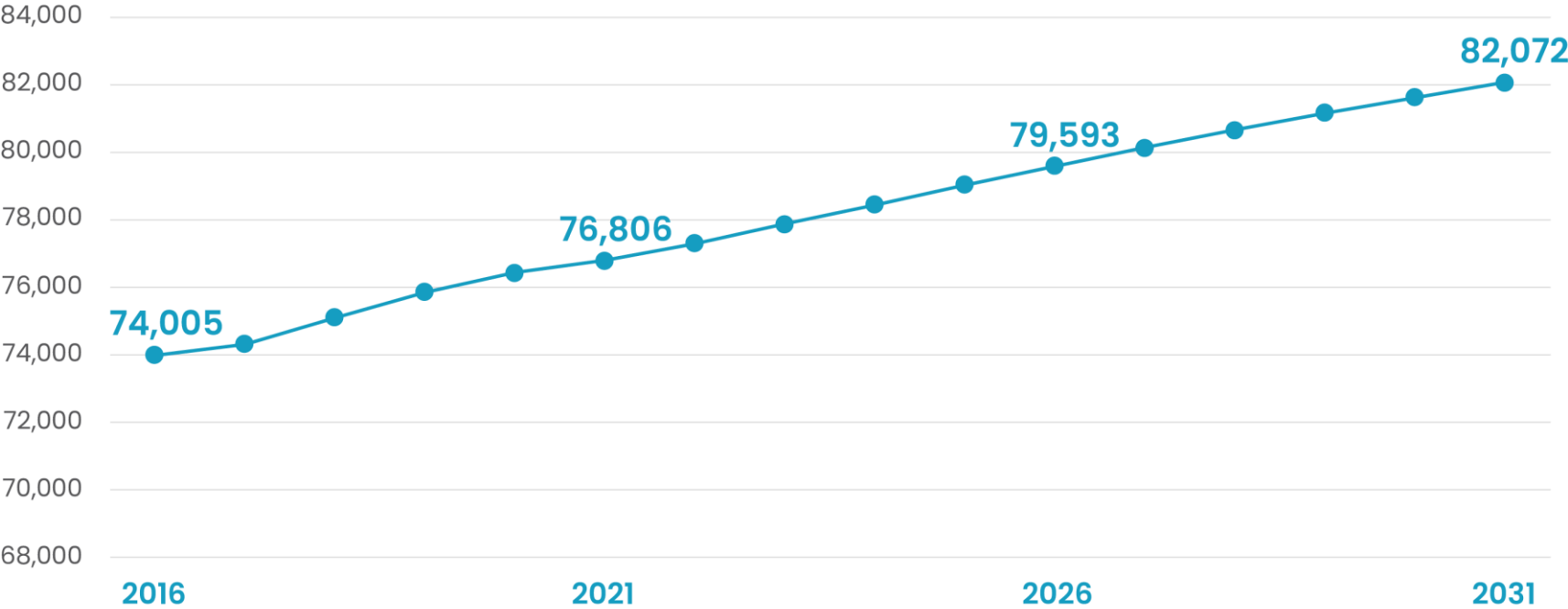
Private Households, City of Prince George and Regional District of Fraser-Fort George, 2006-2016

Private Household by Size




Private Households by Size City of Prince George and Regional District of Fraser-Fort George, 2016

POPULATION PROJECTIONS



Population Projections, City of Prince George, 2016-2031

POPULATION PROJECTIONS: HOUSEHOLD COMPOSITION



Household types	Changes 2016 -2021	Total households 2021	Total households 2026	<u>Total household 2031</u>	Changes 2021 -2026	<u>Changes 2021-2031</u>
Couple without children	639	8,289	8,914	<u>9,347</u>	625	<u>1,058</u>
Couple with children	160	7,350	7,690	<u>7,999</u>	340	<u>649</u>
Lone-parent family	102	3,052	3,224	<u>3,407</u>	172	<u>355</u>
Other census family	91	2,366	2,496	<u>2,600</u>	130	<u>234</u>
Non-census family	747	10,937	11,787	<u>12,559</u>	850	<u>1,622</u>
Total	1,739	31,994	34,111	<u>35,912</u>	2,117	<u>3,918</u>

Projected Households City of Prince George, 2016-2031

POPULATION PROJECTIONS: HOUSEHOLD COMPOSITION

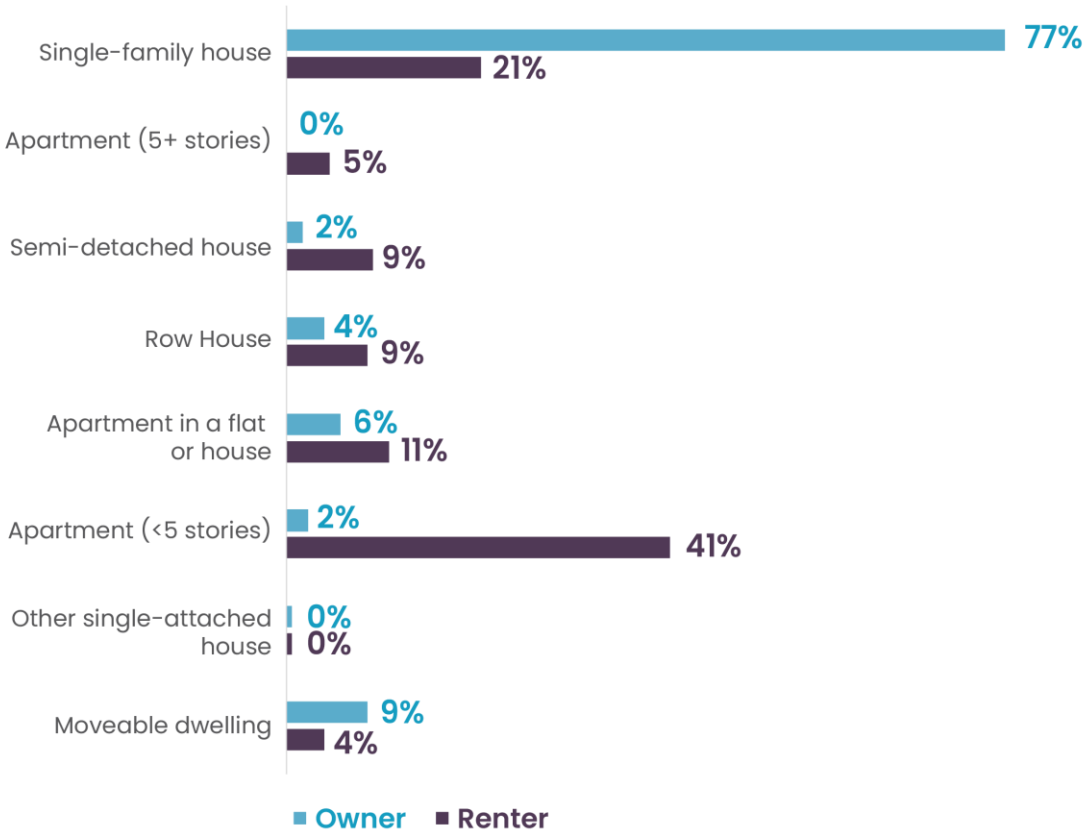


	Additional Households (2021-2031)	Studio & 1-bedroom		2-bedroom		3+ bedroom	
Couple without children	1,058	100%	1,058	0%	0	0%	0
Couple with children	649	0%	0	40%	260	60%	389
Lone-parent family	355	0%	0	61%	217	39%	138
Other census family	234	0%	0	32%	75	68%	159
Non-census family	1,622	84%	1362	12%	195	4%	65
Total		Studio and 1 bedroom	2,420	2 Bedroom	747	3+ Bedroom	751

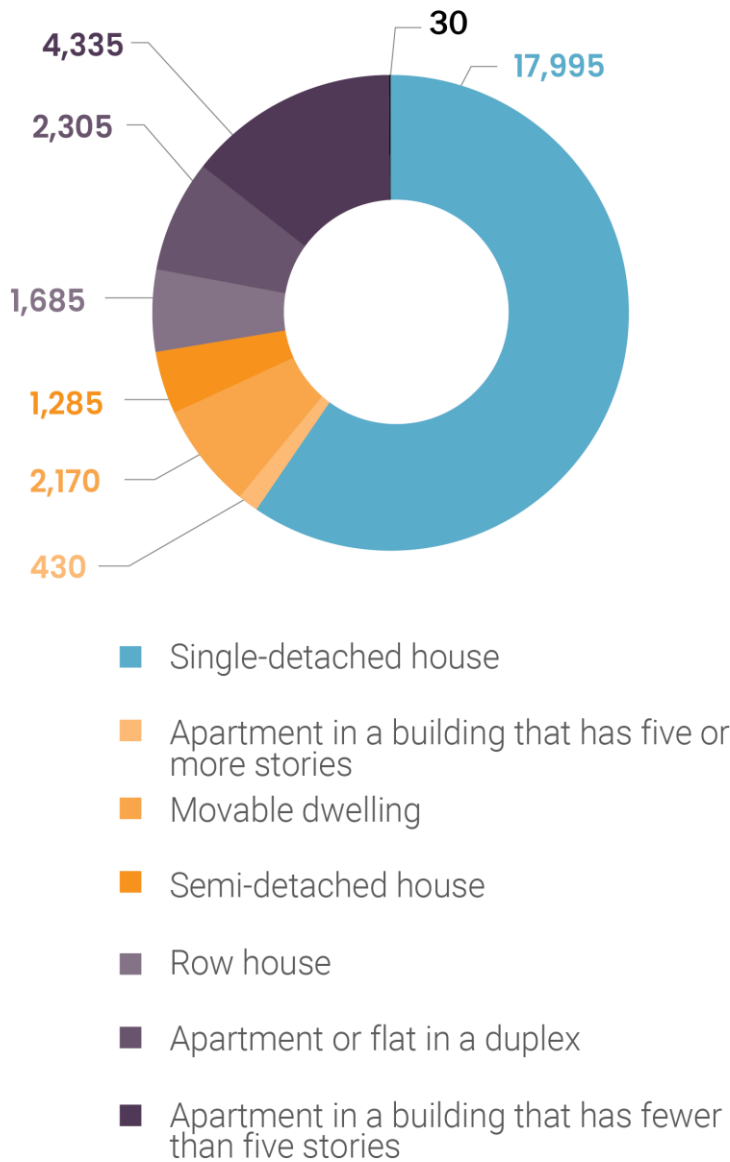
Projected Households City of Prince George, 2016-2031

HOUSING PROFILE

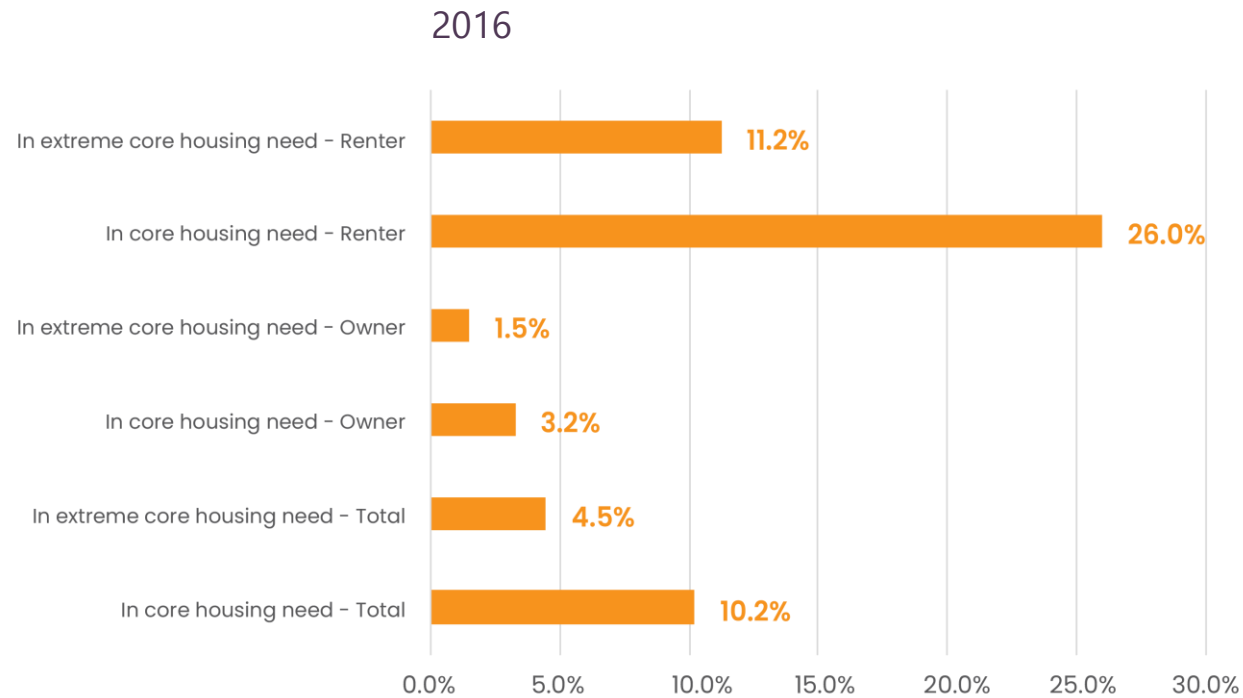
Dwellings by Structure Type and Tenure, City of Prince George



Dwellings by Structure Type, City of Prince George, 2016



CORE HOUSING NEED



Households in Core Housing Need and Extreme Core Housing Need, City of Prince George, 2016

	Households in Core Housing Need	Households in Extreme Core Housing Need
Total	3,015	1,315
Owner	665	300
Renter	2,350	1,015

ENGAGEMENT



Need for more non-market housing



Accessible units



Available housing is not meeting
all resident's diverse needs

In total,
over **750** people
participated in the
engagements:

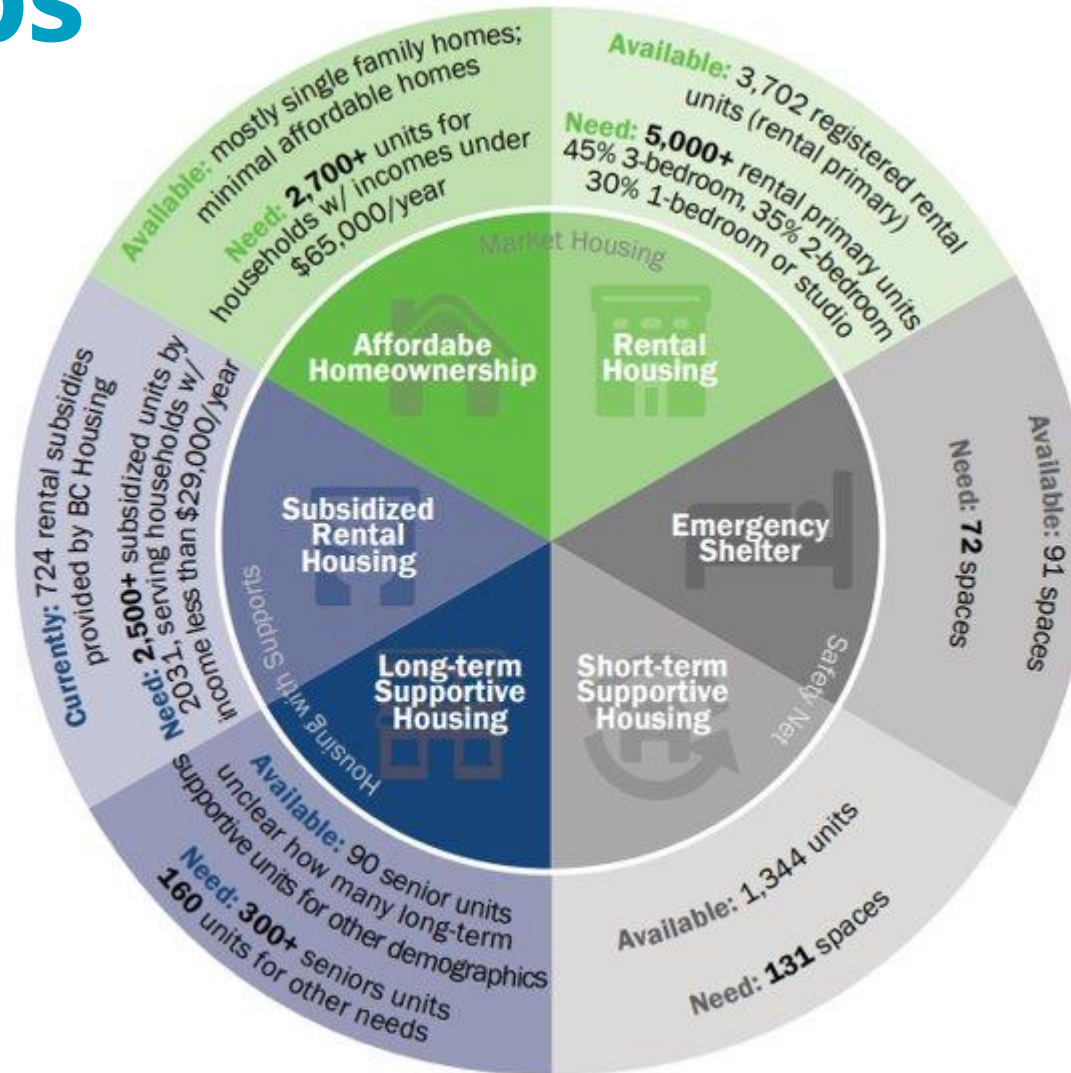
22 people
in focus groups,
7 interviews, &
757 responses to
the public survey

STATEMENTS OF NEED

KEY TAKEAWAYS



Housing Wheelhouse: Identified Gaps



WHAT'S NEXT?

- 2021 Census data will be released over the course of the next ~9 months
 - Initial population data releases are very closely aligned with the projections
 - Housing data to be released in September
 - A brief update on indicators and data could be conducted late 2022/early 2023
- Use the report to inform policy and development approvals processes

