

## REFERENCE PLAN

Of Parcel A District Lot 2098 Plan PGP36956  
and Closed Road shown on Plan EPP113217  
District Lots 2099 and 2098 Both of  
Cariboo District

Pursuant to Section 100(1)(b) of the Land Title Act.

This plan lies within integrated Survey Area No. 39 Prince George,  
BC NAD83 (CSRS) 4.0.0.BC.1

BCGS 93G.096

SCALE:



The intended plot size of this plan is 560mm in width by 432mm in height (C size) when plotted at a scale of 1:1250.

Grid bearings are derived from differential carrier phase GNSS observations and are referred to the central meridian of UTM Zone 10 North.





The UTM coordinates and estimated absolute accuracy achieved are derived from 6 hours of GNSS dual frequency observations processed using the Precise Point Positioning (PPP) service provided by Natural Resources Canada.

This plan shows horizontal ground level distances, unless otherwise specified. To compute grid distances, multiply ground level distances by the average combined factor of 0.9995092. The average combined factor has been determined based on an ellipsoidal elevation of 585 metres.

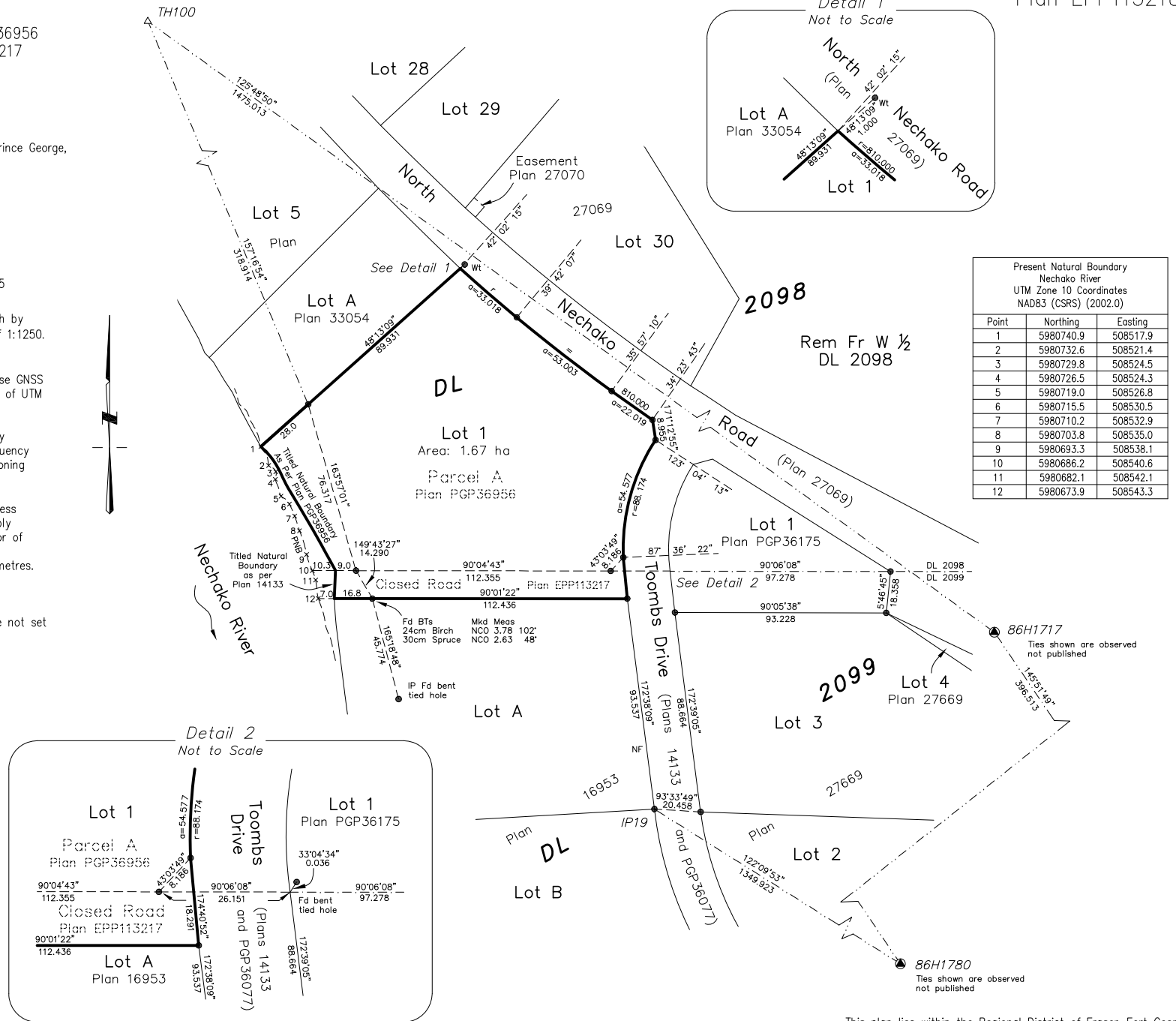
Bearings to bearing trees are magnetic.

This plan shows one or more witness posts which are not set on the true corner(s).

LEGEND:

Symbols		Description
Found	Placed	
	CM	Control Monument
	TH 	Traverse Hub
	IP 	Standard Iron Post
EAA		Estimated Absolute Accuracy
BT		Bearing Tree
Mkd		Marked
Meas		Measured
NCO		Not Cut Out
+		Unmarked Measured Point

UTM Zone 10 Coordinates NAD83 (CSRS) (2002.0)			
Station	Northing	Easting	EAA
TH100	5981053.54	508415.70	0.02
IP19	5980581.11	508691.45	0.04



This plan lies within the Regional District of Fraser-Fort George.

The field survey represented by this plan was completed on the 23rd day of November, 2021.

Darren Kent, BCLS 904