

REFERENCE PLAN

Plan EPP113217

to Accompany Bylaw No. 9223 of the City of Prince George to Close a Portion of Road Dedicated on Plan 14133 District Lot 2099 and Plan PGP36077 District Lot 2098 Both of Cariboo District

Pursuant to Section 120 of the Land Title Act and Section 40 of the Community Charter.

This plan lies within Integrated Survey Area No. 39 Prince George, BC NAD83 (CSRS) 4.0.0.BC.1

BCGS 93G.096

SCALE:



The intended plot size of this plan is 560mm in width by 432mm in height (C size) when plotted at a scale of 1:1250.

Grid bearings are derived from differential carrier phase GNSS observations and are referred to the central meridian of UTM Zone 10 North.

The UTM coordinates and estimated absolute accuracy achieved are derived from 6 hours of GNSS dual frequency observations processed using the Precise Point Positioning (PPP) service provided by Natural Resources Canada.

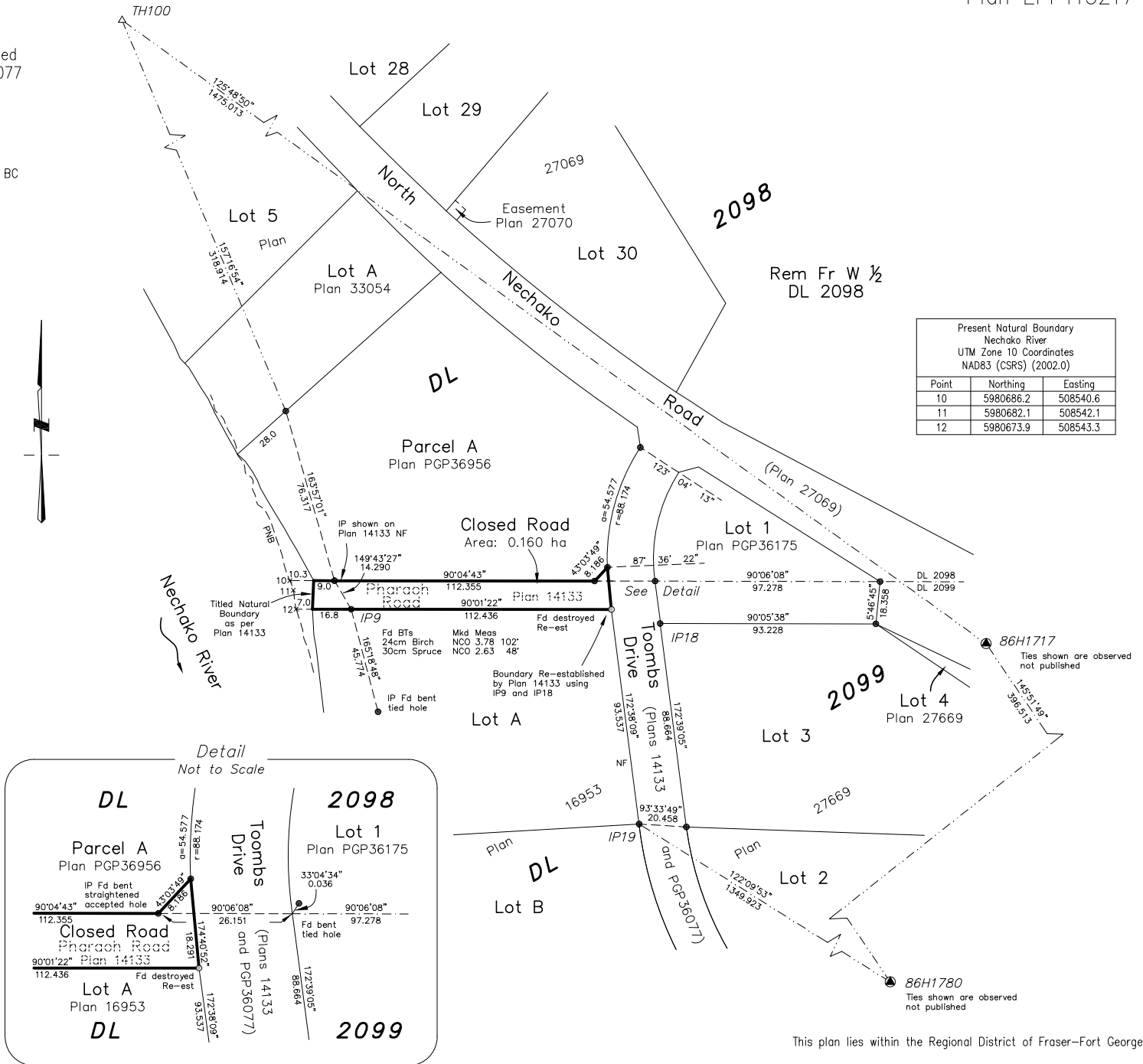
This plan shows horizontal ground level distances, unless otherwise specified. To compute grid distances, multiply ground level distances by the average combined factor of 0.9995092. The average combined factor has been determined based on an ellipsoidal elevation of 585 metres.

Bearings to bearing trees are magnetic.

LEGEND:

| Symbols Found | Placed | Description |
|---------------|------------------|-----------------------------|
| CM | Control Monument | |
| TH | △ | Traverse Hub |
| IP | ○ | Standard Iron Post |
| EAA | | Estimated Absolute Accuracy |
| BT | | Bearing Tree |
| Mkd | | Marked |
| Meas | | Measured |
| NCO | | Not Cut Out |
| + | | Unmarked Measured Point |
| Re-est | | Re-established |

| UTM Zone 10 Coordinates NAD83 (CSRS) (2002.0) | | | |
|--|------------|-----------|------|
| Station | Northing | Easting | EAA |
| TH100 | 5981053.54 | 508415.70 | 0.02 |
| IP19 | 5980581.11 | 508691.45 | 0.04 |



| Present Natural Boundary Nechako River UTM Zone 10 Coordinates NAD83 (CSRS) (2002.0) | | |
|---|-----------|----------|
| Point | Northing | Easting |
| 10 | 5980686.2 | 508540.6 |
| 11 | 5980682.1 | 508542.1 |
| 12 | 5980673.9 | 508543.3 |

This plan lies within the Regional District of Fraser-Fort George.

The field survey represented by this plan was completed on the 23rd day of November, 2021.

Darren Kent, BCLS 904



Prince George
203-1300 1st Ave.
Prince George, BC V2L 2Y3
250.640.2287

Smithers
3750 1st Ave. P.O. Box 536
Smithers, BC V0J 2N0
250.847.3808

www.HBHLandSurveying.com

HBH File CPG2103-RC