

First two readings passed by a
and eligible to vote.

decision of Members of City Council present

READ A THIRD TIME THIS

DAY OF

, 2021.

Third reading passed by a
eligible to vote.

decision of Members of City Council present and

Certified correct as passed third reading this

day of

, 2021.

CORPORATE OFFICER OF
THE CITY OF PRINCE GEORGE

APPROVED BY THE MINISTER OF TRANSPORTATION AND INFRASTRUCTURE PURSUANT TO
THE PROVISIONS OF SECTION 41(3) OF THE *COMMUNITY CHARTER*.

THIS

DAY OF

2021.

for MINISTER OF TRANSPORTATION
AND INFRASTRUCTURE

ADOPTED THIS

DAY OF

, 2021,

BY A
ELIGIBLE TO VOTE.

DECISION OF ALL MEMBERS OF CITY COUNCIL PRESENT AND

MAYOR

CORPORATE OFFICER

**Reference Plan to Accompany
By-law No. 9194 Closing a
Portion of Road Shown Dedicated
on Plan 902, District Lot 629,
Cariboo District.**

Pursuant to Section 120 of the Land Title Act and
Section 40 of the Community Charter
Integrated survey area No. 39 Prince George, BC,
NAD83 (CSRS) 4.0.0.BC.1

BCGS 93G.097



The intended plot size of this plan is 432mm in width by 559mm in height (C size) when plotted at a scale of 1:750.

All distances are in metres and decimals thereof.

Grid bearings are derived from GNSS observations and are referred to the central meridian of UTM Zone 10 North (123° west longitude).

This plan shows horizontal ground-level distances unless otherwise specified. To compute grid distances, multiply ground-level distances by the combined factor of 0.9995004 which has been derived by single point positioning techniques using the precise point positioning (PPP) services of Natural Resources Canada.

The UTM coordinates and estimated absolute accuracies shown on this plan are a result of an independent and accurate GNSS survey. Positions for Geodetic Control Monuments which are calculated from information on this plan may not agree with official published coordinates.

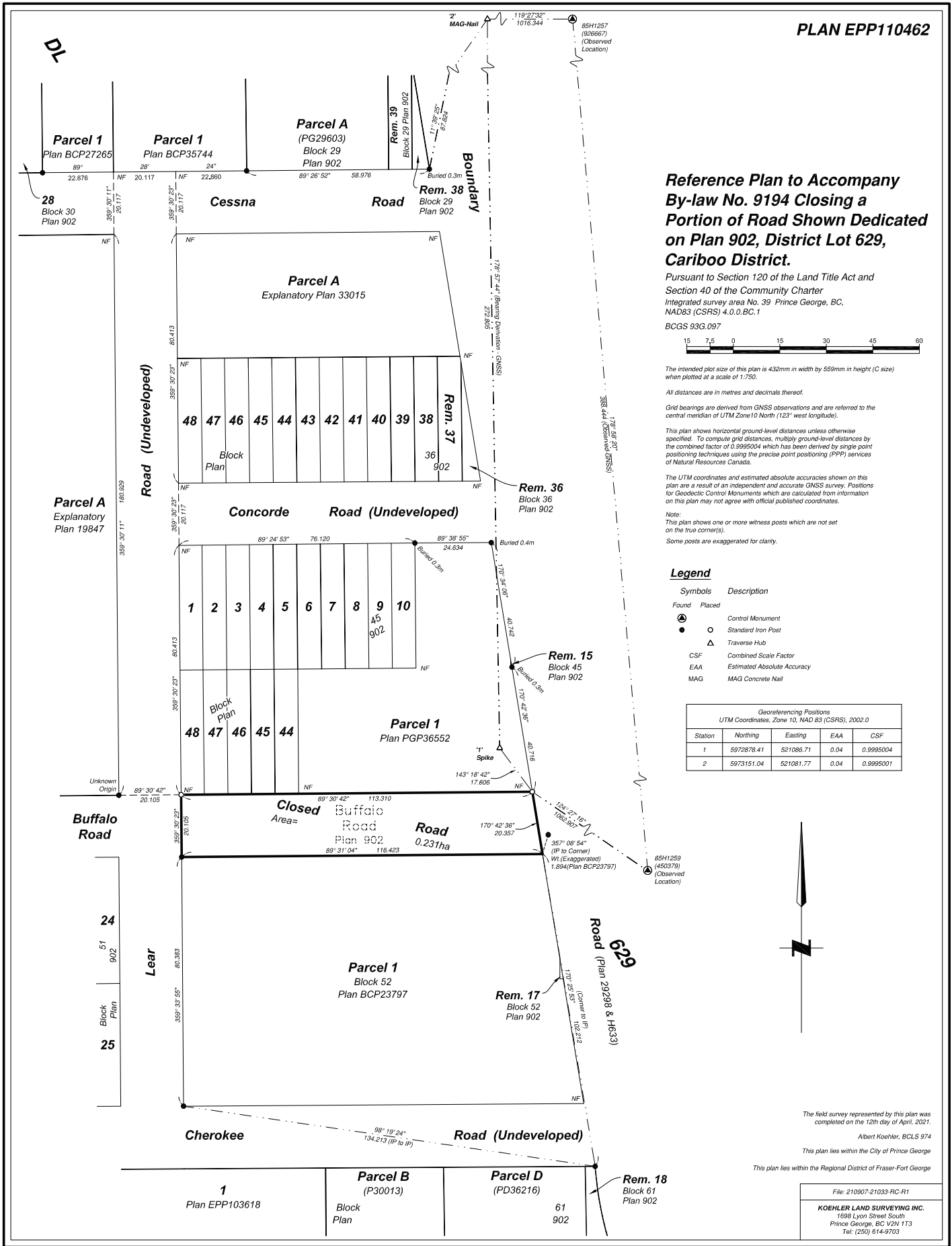
Note:
This plan shows one or more witness posts which are not set on the true corner(s).
Some posts are exaggerated for clarity.

Legend

Found	Placed	Description
⊙	⊙	Control Monument
●	○	Standard Iron Post
△	△	Traverse Hub
CSF		Combined Scale Factor
EAA		Estimated Absolute Accuracy
MAG		MAG Concrete Nail

Georeferencing Positions
UTM Coordinates, Zone 10, NAD 83 (CSRS), 2002.0

Station	Northing	Easting	EAA	CSF
1	5972878.41	521086.71	0.04	0.9995004
2	5973151.04	521081.77	0.04	0.9995001



The field survey represented by this plan was completed on the 12th day of April, 2021.

Albert Koehler, BCLS 974

This plan lies within the City of Prince George

This plan lies within the Regional District of Fraser-Fort George

File: 210907-21033-RC-R1
KOEHLER LAND SURVEYING INC.
 1698 Lyon Street South
 Prince George, BC V2N 1T3
 Tel: (250) 614-9703